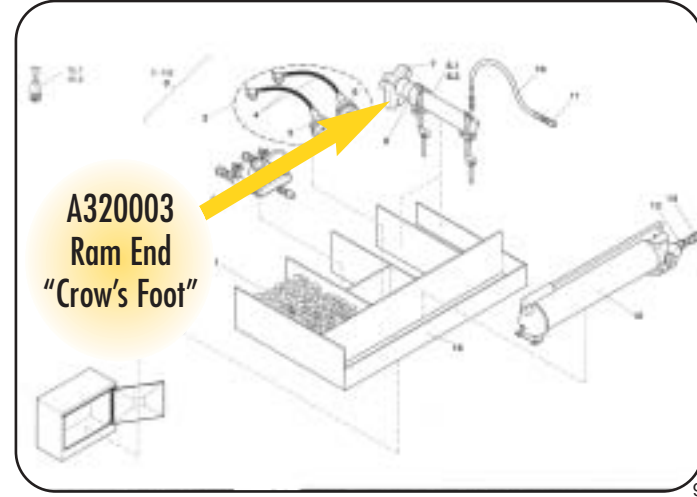
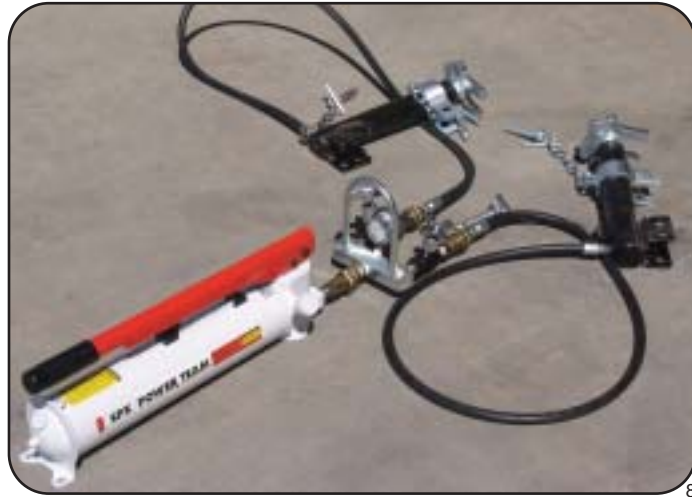


ON ANOTHER TOPIC:

Tightening Belt Tensioning Jacks



When the tensioning jack sets are assembled, the A320003 ram ends or “crow’s feet” need to be tightly screwed into the ram ends. If they come loose, the threaded end of the crow’s feet will bend when pressure is applied, and the threads will be damaged.

Here’s how to prevent this situation:

- A** Connect the gauge tee and rams to the hand pump.
- B** Screw the crow’s feet into place - hand tight.
- C** Close the release valve and pump both rams out fully.
- D** Continue pumping until there is about 2000-psi showing on the gauge.
- E** Hold the rams with one hand and sharply strike the side of the crow’s feet with a 4-pound hammer.

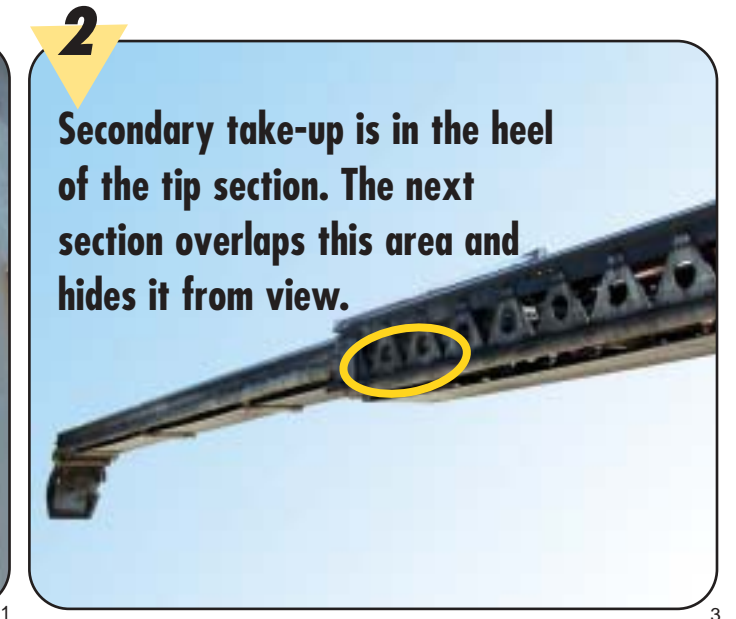
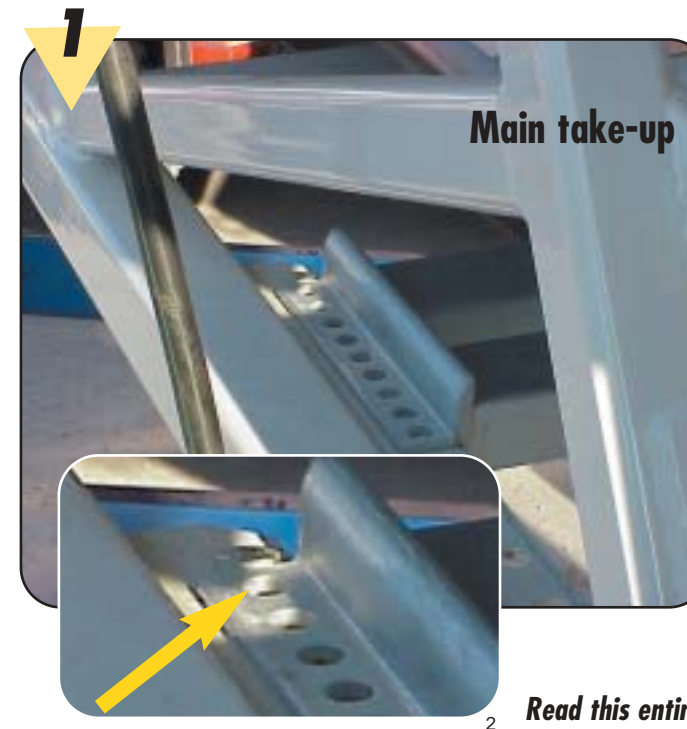
This both seats the threads of the crow’s feet and checks for fitting leaks.



**Questions? Call the Putzmeister Customer Support Center.
1-800-890-0269**

Don't Forget the Secondary Take-Up

Helpful Tips to Adjust the Secondary Take-Up for Tensioning the Main Conveyor Belt



Read this entire procedure. Observe safety rules when working on equipment.

As the main belt stretches over time, it can be adjusted via both a main and a secondary belt take-up. Most Telebelt owners are aware of the approximate 5-ft. of main take-up to tighten the main belt.

However, there is a secondary take-up that can also be adjusted, which adds about another 4-ft. It is located

in the heel of the tip section within the main boom.

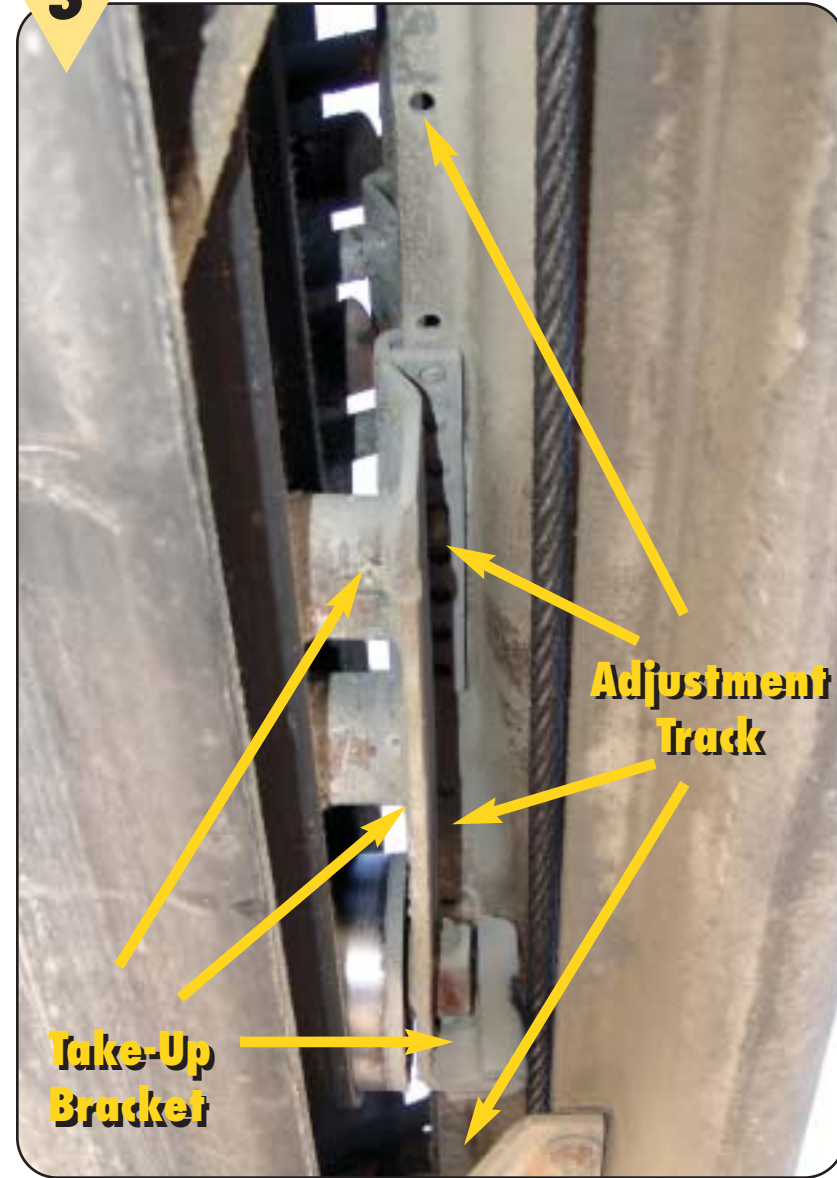
If the Telebelt owner takes advantage of both take-up locations, that’s a total of 9-ft. of take-up – this equals 18-ft. of belt length. The added use of the secondary take-up can avoid the expense of resplicing a belt sooner than necessary.

NOTE: Both of the take-ups must be fully retracted before resplicing or replacing the main belt.

This bulletin applies to Telebelt models TB 80, TB 105, TB 110 and TB 130.

Photos and diagrams illustrate both new and used Telebelt models.

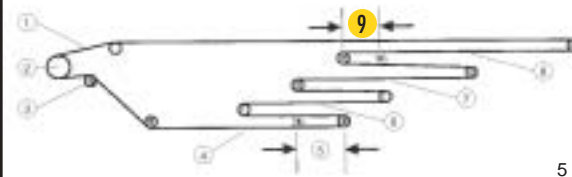
3



Adjustment of Secondary Take-Up

If the end of the truss section take-up is reached and belt tension is NOT sufficient, perform the following steps:

- A. Put a bolt in the first hole of the main take-up track.
- B. Release belt tension at take-up and slide pulley toward tail of truss section.
- C. At the secondary take-up bracket, in tail of tip section, remove retainer bolts in rail slides. See diagram below.



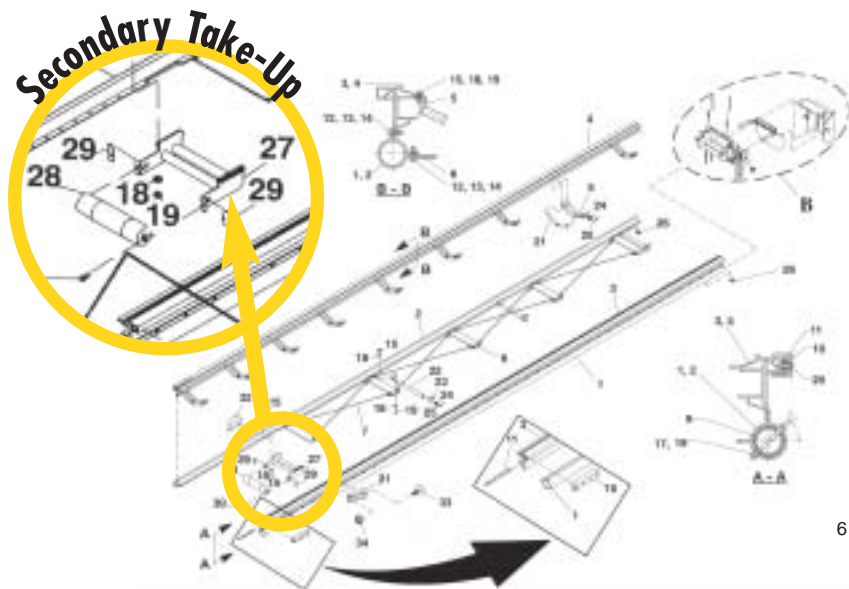
Main Conveyor Belt Reeving

- | | |
|---|--|
| 1. Conveyor belt | 6. Inner midsection (I) |
| 2. Drive pulley | 7. Outer midsection (O) |
| 3. Snub pulley (S) | 8. Tip or head section (H) |
| 4. Main or base section (B) | 9. Tip section or secondary take-up (approx 4-ft.) |
| 5. Main or base section take-up (approx 5-ft) | |

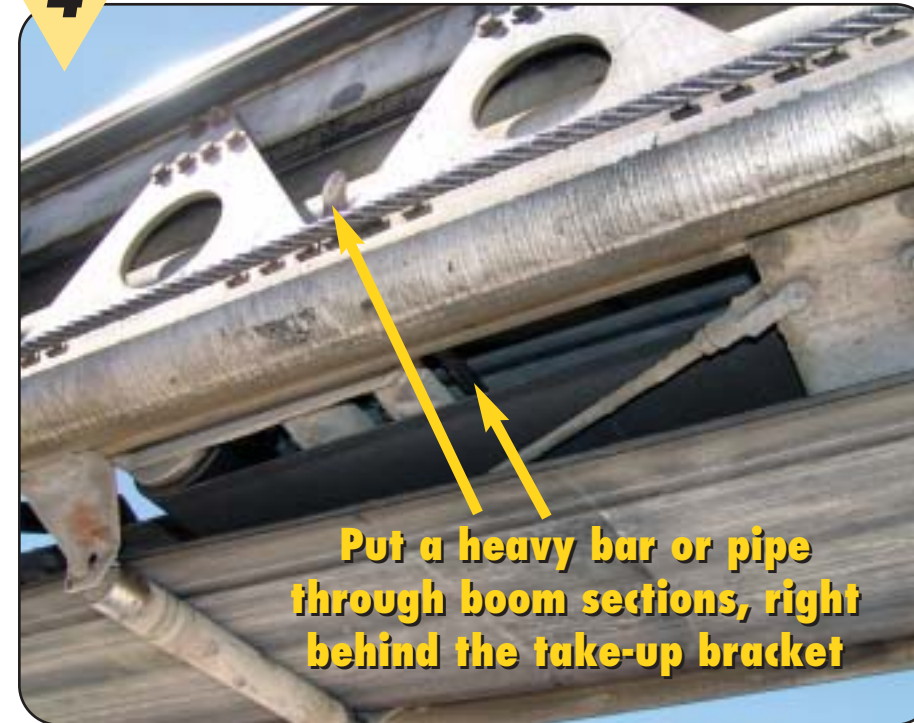
NOTE: On the diagram above, the main belt is tightened when the secondary take-up is tightened from *right to left* and the main take-up is tightened in the other direction, from *left to right*.

D. Pull secondary take-up bracket toward tail end of tip section and replace bolts. Count holes to ensure that take-up is square with rails, and replace bolts. Only pull the belt snug – do **not** stretch belt at this time.

E. Re-tension belt at main take-up, using jacks as outlined in the Telebelt Operators Manual.



4



A Helpful Tip for Adjusting the Secondary Take-Up

Jacks are used on the main take-up to tension the belt. However, using jacks for the secondary take-up can be cumbersome, so a heavy bar or pipe can be used to hold the bracket in place.

Here's how to use this trick:

- A. Fully extend the tip section and half of the next section.
- B. Retract tip section approx 10-ft.
- C. Slide pipe through the boom behind the tip side of secondary take-up bracket (see photo).
- D. Loosen take-up bracket with hammer and remove retaining bolts from adjustment track.
- E. Telescope tip section out slowly until belt is snug – not tight.
- F. Replace bolts and make sure bracket is square by counting bolt holes on both sides.
- G. Retract tip section slightly and remove the pipe.

Words of CAUTION and Helpful Reminders

CAUTION

When the belt is respliced or replaced, be sure to position the secondary take-up first. This will prevent the take-up bracket from hitting the end frame of the next section.

CAUTION

Only tighten the secondary take-up enough to remove slack. Do final tensioning with jacks at main take-up.

REMINDER

Don't forget to count holes on take-ups to ensure they are square.

CAUTION

Run belt slowly and check for run-off at the main and secondary take-ups. Use a single jack to correct runoff.

CAUTION

Do not place hands, arms or any body parts into the telescoping boom or any part of the conveyor without first shutting off the truck engine.

CAUTION

Place a bolt into the last hole of the main boom take-up rail so the take-up bracket doesn't slide back and fall out, hitting someone in the kneecap.

