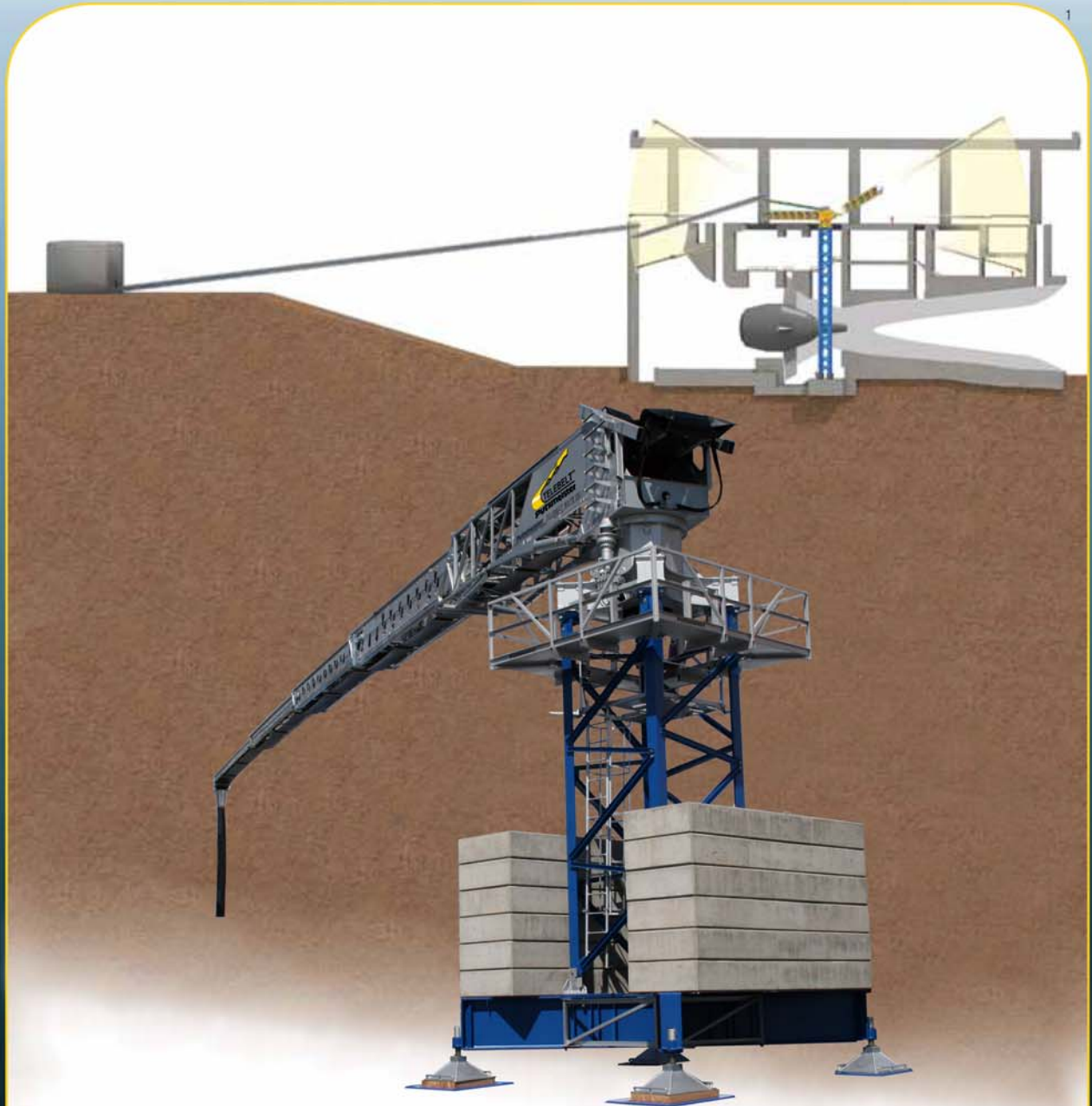


Telebelt® MX TB 130 & MX TB 600

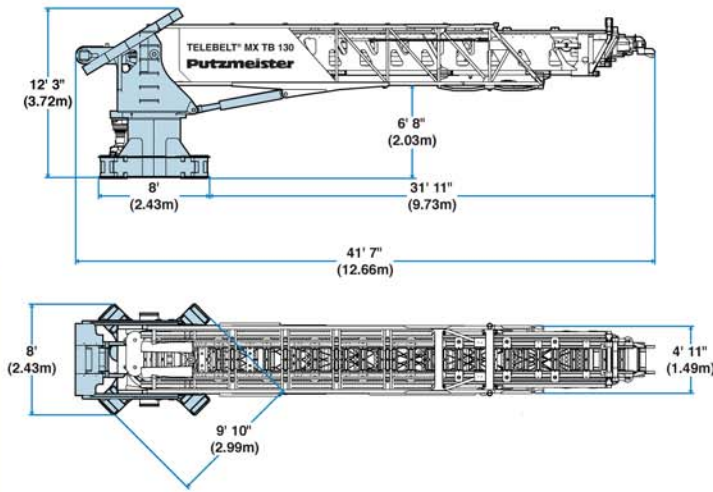
Placing Conveyor

Putzmeister



MX TB 130 & MX TB 600

- Mass large aggregate concrete placement
- Placing tower configuration
- Part of an overland conveyor system
- Smooth surge-free conveying results



Placing Conveyor Advantages:

- **Conveyor System:**
 - Designed for use on large civil projects such as dams, hydroelectric power houses, and coal and nuclear power plants.
 - Ideal for conveying mass quantities of large aggregate, near zero slump concrete.
 - Provides the flexibility needed as the final stage of an overland conveyor system, which conveys concrete from the batch plant or surge hoppers.
- **Telebelt Conveyor:**
 - Same, reliable boom as offered on our truck- and semi-trailer-mounted Telebelt.
 - 360-degree rotation
 - Up to 29-degrees up elevation
 - 15-degrees down elevation
- **Putzmeister Tower:**
 - Conveyor mounts to our 43 ft² (4.41m²) lattice tower.
 - Base mounting options are a cross base or foundation anchors.
 - Can freestand up to 80 feet (24m).
 - Tower climbs in 12-foot (3.70m) or 18-foot (5.50m) increments.

Preliminary Specifications

Conveyors	MX TB 130 5-arm		MX TB 600 4-arm	
Conveyor horizontal reach —				
Maximum at 0°	126' 6"	(38.56m)	102'	(31.08m)
Maximum at 29°	110' 9"	(33.74m)	89' 3"	(27.20m)
Conveyor belt width	18"	(457mm)	24"	(610mm)
Trunk/end hose length	15'	(4.57m)	15'	(4.57m)
Discharge height from level —				
Maximum at 29°	68' 3"	(20.81m)	55'	(16.78m)
Maximum at -15°	-25' 10"	(-7.86m)	-20' 9"	(-6.34m)
Rated capacity at 0°	6 yd ³ /min (4.60m ³ /min)		10 yd ³ /min (7.65m ³ /min)	
main conveyor	360 yd ³ /hr (275m ³ /hr)		600 yd ³ /hr (458m ³ /hr)	
Rated capacity up to 20°	3.80 yd ³ /min (2.90m ³ /min)		6.30 yd ³ /min (4.81m ³ /min)	
main conveyor	230 yd ³ /hr (175m ³ /hr)		378 yd ³ /hr (288m ³ /hr)	
Rotation — hydraulic	360°		360°	

Lattice Tower

Section Height —				
Option 1	12'	(3.70m)	12'	(3.70m)
Option 2	18'	(5.50m)	18'	(5.50m)
Width — Both	43 ft ²	(4.41m ²)	43 ft ²	(4.41m ²)
Weight — 12' (3.70m)	5,577 lbs	(2,530kg)	5,577 lbs	(2,530kg)
Weight — 18' (5.50m)	7,330 lbs	(3,325kg)	7,330 lbs	(3,325kg)

Power Pack

Model	Deutz		Deutz	
EU stage/EPA	3A/Tier 3		3A/Tier 3	
Cylinder	6		6	
Fuel	Diesel		Diesel	
Displacement	6.06 liter		6.06 liter	
Power	208 HP	(155kW)	208 HP	(155kW)

Weights*

Boom	15,800 lbs	(7,166kg)	15,800 lbs	(7,166kg)
Turret	6,000 lbs	(2,721kg)	6,000 lbs	(2,721kg)
Pedestal	7,982 lbs	(3,621kg)	7,982 lbs	(3,621kg)
Total	29,782 lbs	(13,508kg)	29,782 lbs	(13,508kg)

Maximum theoretical values listed.
*Weights are approximate.

Putzmeister

Putzmeister America, Inc. Telephone (262) 886-3200
 1733 90th Street (800) 884-7210
 Sturtevant, WI 53177 USA Facsimile (262) 884-6338
 Telebelt@putzam.com
 www.PutzmeisterAmerica.com



2

Authorized Distributor