



Modular Control Box



Ergonic[®] Graphic Display



OneTouch[™] Radio Remote

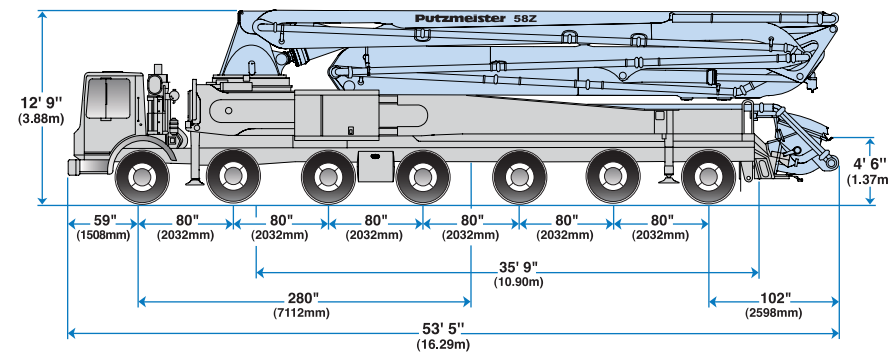
Putting You in Control of Success

While size matters, it's nothing without control. Another standard feature on the 58Z-Meter, Putzmeister's Ergonic[®] technology goes beyond monitoring performance. It also allows the operator to set parameters that control the boom, the pump and various other functions. Ergonic is a main control system that encompasses various modules housed in the **Modular Control Box**. These include the Ergonic Pump Control System (EPS) for the pump and various operational functions, Ergonic Tele Service (ETS) for real-time remote diagnosis of computer fault codes in the field and Ergonic Boom Control (EBC).

EPS includes an **Ergonic Graphic Display (EGD)**, featuring a three-inch square LCD screen which allows the operator to both view functions from the unique modular control box and change selected pump settings such as number of strokes per minute, pressure limits, truck rpm and more. This module also includes Ergonic Output Control (EOC), which automatically controls optimum engine rpm while ensuring the lowest possible fuel consumption, reduced wear and low noise levels.

ETS allows the Putzmeister support group to wirelessly access and troubleshoot any problems that may occur with the Ergonic computer systems. With this setup, Putzmeister Customer Support technicians can check the Ergonic computer systems anytime the truck is in PTO mode. This includes viewing software versions, engine rpm, stroke time, high pressure, pump output, e-stop, oil temperature, pressure in the boom cylinders, boom position, radio remote functions, operating hours and fault histories.

Providing technology to ensure minimal boom bounce, enhanced safety and easy troubleshooting, the Ergonic system features EBC with OneTouch.[™] This unique module enables the operator to use a single joystick on the radio remote to automatically move all boom sections and slewing in tandem while keeping the end hose level and the boom within prescribed maximum and minimum heights.



58Z-Meter Truck-Mounted Specifications

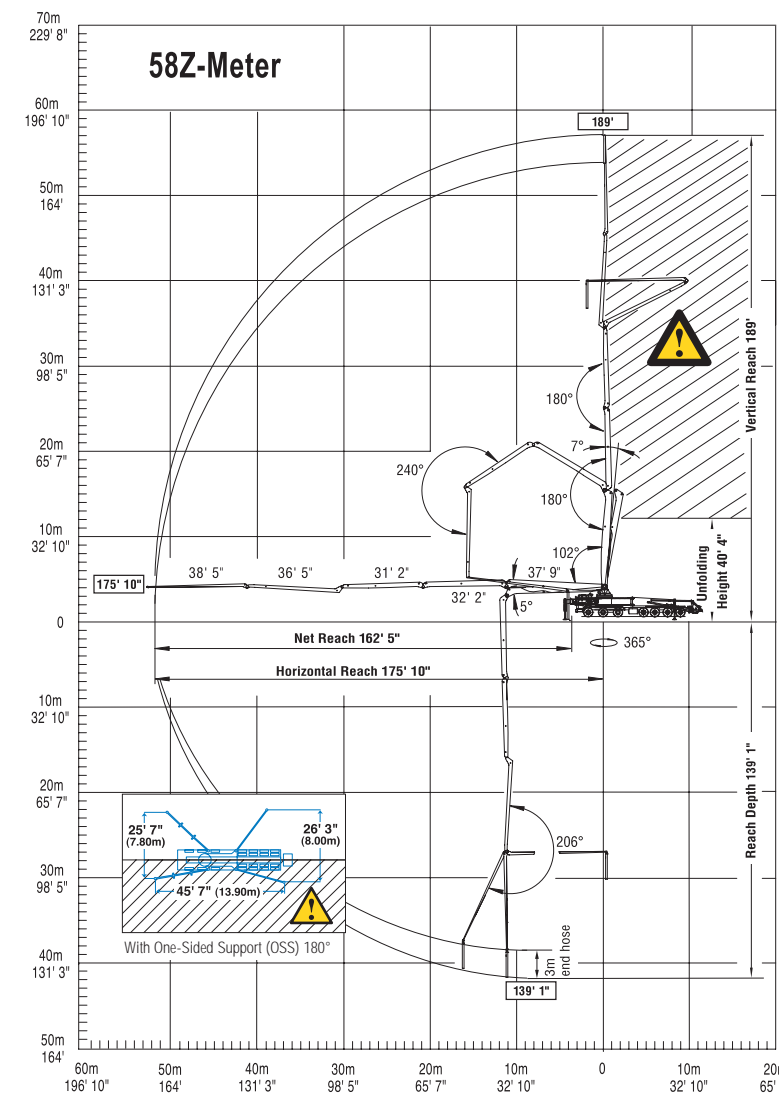
Length 53' 5" (16.29m)
 Width 8' 2" (2.50m)
 Height 12' 9" (3.88m)
 Wheelbase 280" (7,112mm)
 Front axle weight 52,060 lbs (23,614kg)
 Rear axle weight 66,740 lbs (30,273kg)
 Approx. total weight 118,800 lbs (53,887kg)

Weights are approximate and include pump, boom, truck, full hydraulic oil, driver and some fuel. Varies with options selected.

Dimensions will vary with different truck makes, models and specifications.

58Z-Meter

Range Diagram



Boom Specifications • Z-Fold Design

Height & Reach		
Vertical reach	189'	(57.60m)
Horizontal reach	175' 10"	(53.60m)
Reach from front of truck*	162' 5"	(49.50m)
Reach depth	139' 1"	(42.40m)
Unfolding height	40' 4"	(12.30m)

5-Section Boom		
1st section articulation	102°	
2nd section articulation	180°	
3rd section articulation	180°	
4th section articulation	240°	
5th section articulation	206°	

1st section length	37' 9"	(11.50m)
2nd section length	32' 2"	(9.80m)
3rd section length	31' 2"	(9.50m)
4th section length	36' 5"	(11.10m)
5th section length	38' 5"	(11.70m)

General Specs		
Pipeline size (ID) metric ends	5"	(125mm)
Rotation	365°	
End hose — length	10'	(3m)
End hose — diameter	5"	(125mm)
Outrigger spread L - R — front swing out, telescope & extend down	36' 5"	(11.10m)
Outrigger spread L - R — rear swing out & extend down	37' 9"	(11.50m)

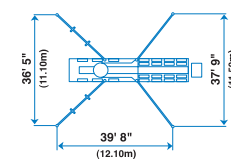
Pump Specifications

	58Z.16H	58Z.20H
Output — rod side	210 yd ³ /hr (160m ³ /hr)	—
piston side	146 yd ³ /hr (112m ³ /hr)	260 yd ³ /hr (200m ³ /hr)
Pressure — rod side	1233 psi (85 bar)	—
piston side	1885 psi (130 bar)	1233 psi (85 bar)
Material cylinder diameter	9" (230mm)	11" (280mm)
Stroke length	83" (2100mm)	83" (2100mm)
Max strokes per minute — rod side	31	—
piston side	21	26
Volume control	0-Full	0-Full
Vibrator	Standard	Standard
Hard-chromed material cylinders	Standard	Standard
Hydraulic system	Free Flow	Free Flow
Hydraulic system pressure	5075 psi (350 bar)	5075 psi (350 bar)
Differential cylinder diameter	5.5" (140mm)	5.5" (140mm)
Rod diameter	3.1" (80mm)	3.1" (80mm)
Maximum size aggregate	2.5" (63mm)	2.5" (63mm)
Water tank — outrigger	206 gal (780L)	206 gal (780L)

Maximum theoretical values listed.
 * Applies to units mounted on PMA stock truck — MACK MRU 613
 • Standard delivery line system rated at max line pressure of 1233 psi (85 bar)

⚠ End hose not to be operated in caution area.

Photos and drawings are for illustrative purposes only. For available options, please refer to price list.



Authorized Distributor



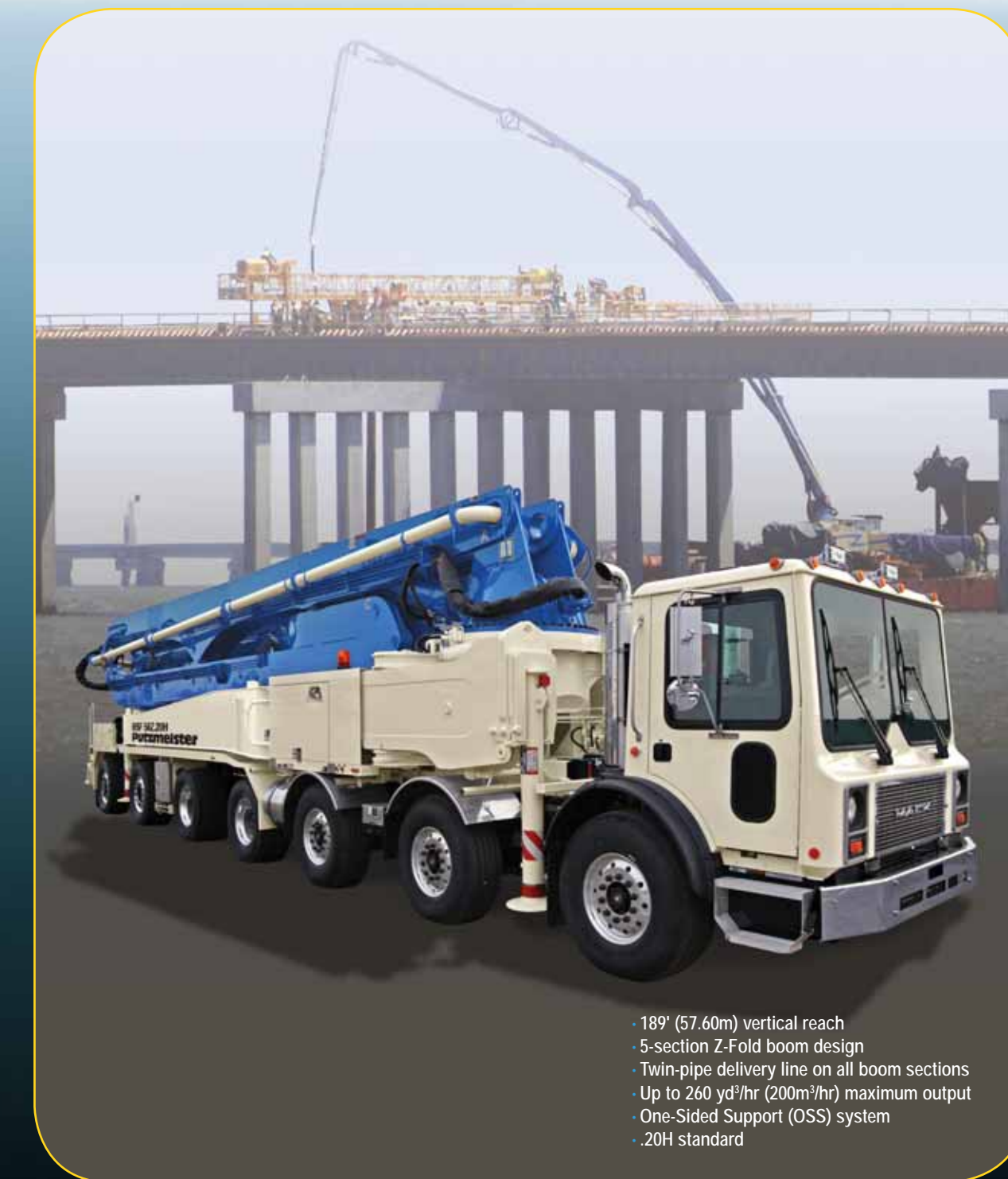
Putzmeister America, Inc.
 1733 90th Street
 Sturtevant, WI 53177 USA
 Telephone (262) 886-3200
 (800) 884-7210
 Facsimile (262) 884-6338
 www.putzmeister.com



17

58Z-Meter

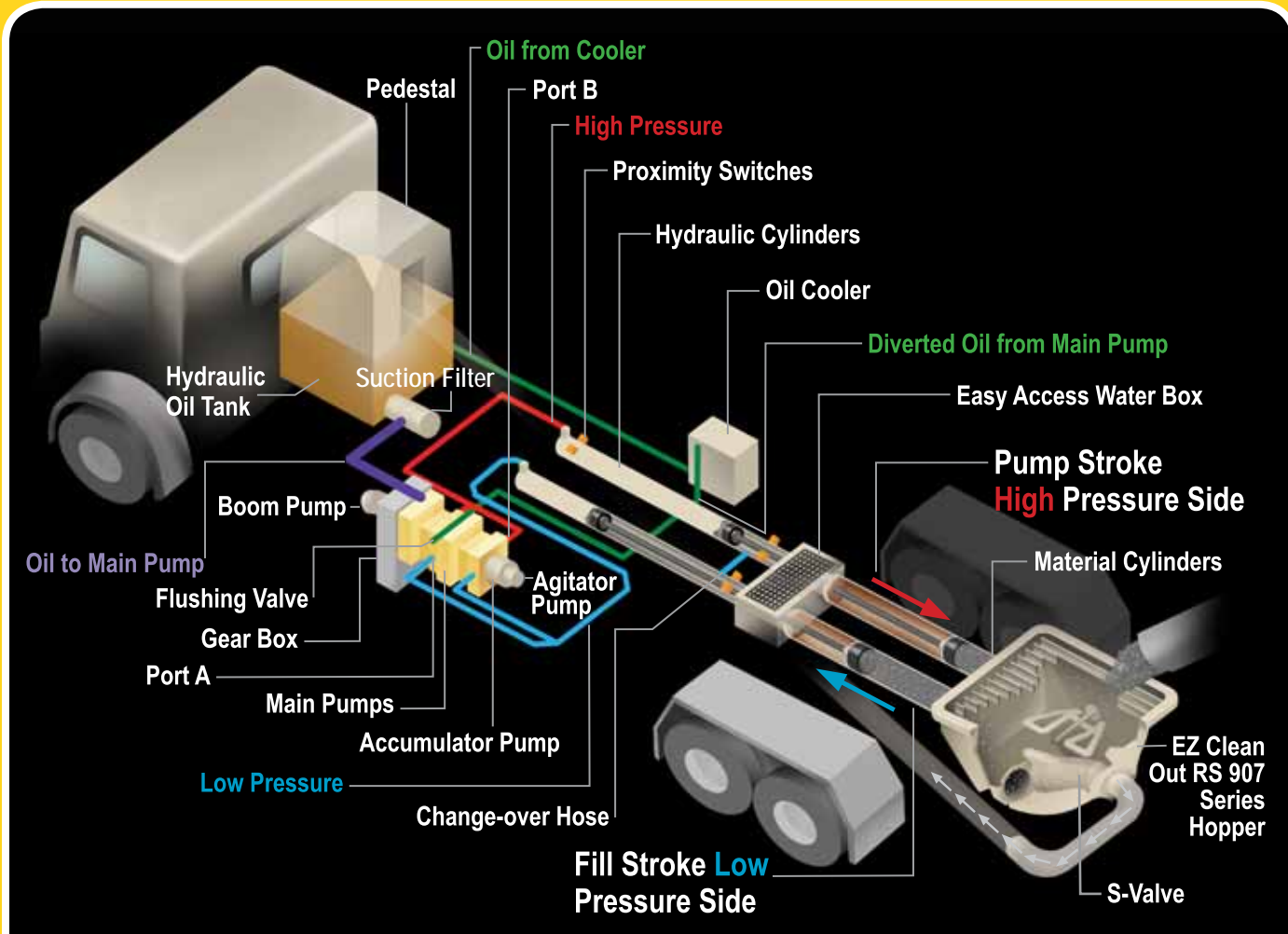
Truck-Mounted Concrete Boom Pump



- 189' (57.60m) vertical reach
- 5-section Z-Fold boom design
- Twin-pipe delivery line on all boom sections
- Up to 260 yd³/hr (200m³/hr) maximum output
- One-Sided Support (OSS) system
- .20H standard

Putzmeister

FREE FLOW HYDRAULICS



Putzmeister Free Flow Hydraulics in a Closed Loop System

The pumps at the heart of Putzmeister's free flow pumping system are bi-directional, variable displacement piston pumps. Depending on stroke, oil flows in a closed loop from either port A or port B on the pump to the hydraulic cylinders.

Depending on the specific pump cell size, up to 20% of the oil leaves the simple closed loop system during each stroke through a flushing valve on the main pump and cycles to a cooler before it returns to the hydraulic oil tank. Removing and cooling only this minimal amount of oil is possible because, unlike an open loop system, the oil flows freely without passing through any unnecessary valves that can generate heat.

The closed loop also requires far less oil to run the system, as a larger reservoir is not necessary to cool all of the oil.

Speed and timing are also critical to superior performance. Quicker and more responsive than a hydraulic signal, the electrical system on a Putzmeister pump minimizes the time it takes to change direction at stroke end.

An electrical signal precisely synchronizes the drive cylinders with the accumulator system that controls the S-Valve in the hopper. Reserved energy stored in a nitrogen bladder is sent as a supercharged blast of oil at precisely the right moment to facilitate a smooth and fast shift of the S-Valve from one position to another.

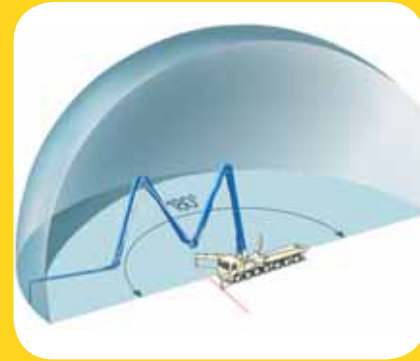
Key Advantages of Putzmeister's Free Flow Hydraulics:

- Changes in material pressure in the delivery line are reduced to ensure smooth pumping and a consistent concrete flow.
- There is greater pump output due to the efficient use of all available energy.
- The intelligent design minimizes wear-inducing pressure peaks, increases service life and makes our pumps extremely powerful.
- Rapid change-over of the stroke means higher outputs, a smoother flow of concrete and less boom bounce.

Putzmeister

BOOM PUMP

ADVANTAGE



One-Sided Support (OSS) System

For enhanced job site versatility, Putzmeister's unique OSS system allows the operator to reduce the outrigger extension on one side of the unit to create a smaller overall machine footprint. Utilizing a series of sensors, OSS enables the unit to maintain a defined and safe 180 degree working envelope on space restrictive sites that demand a larger boom.



Better Boom Design

Robust and more resilient, Putzmeister's "smart design" boom incorporates welding seams below the edge of maximum stress. The boom is engineered to offer the flexibility to adapt to different loads, features more straight pipe for a less stressful concrete flow and longer wear on parts. The Z-Fold configuration handles space restrictive areas and can pump even if the boom is not fully extended.



RS 907L Hopper

Putzmeister's EZ Clean Out RS 907L hopper combines an impact resistant solid polyurethane component with a steel base for a durable, yet lightweight design. Engineered for performance and easy maintenance, the RS 907L features quick access to the S-Valve and shift cylinders. Hard-faced remixer paddles and a vibrator complement the hopper's large 19.4 cu. ft. (550L) capacity.

58Z-Meter

Truck-Mounted Concrete Boom Pump Standard Features

Boom

- 189' (57.60m) vertical reach
- Versatile 5-section Z-Fold boom
- Automatic lubrication
- Integrated work lights

Delivery Line

- Equipped with 5" (125mm) twin-pipe delivery line on all boom sections providing efficient concrete delivery
- ESSER 900 twin-pipe deck pipe with 900 turret elbow
- Easy lift-out brackets for simple delivery line replacement
- Standardized elbows and straight pipe sections
- Common component availability and easy replacement

Pedestal

- Rotation bearing and access openings simplify turret pipe changes
- Fully integrated pedestal design absorbs all forces
- Easy access large single-suction filter with indicator gauge
- Condensation trap in the hydraulic tank for water collection
- Two spacious decks for convenient pipe and hose storage
- Automatic lubrication
- Side-mounted aluminum toolboxes
- Integrated work lights
- Breakaway rear steps

Boom Operation and Control

- Fully proportional HBC radio remote
- Smooth and precise boom positioning at greater distances
- Fully proportional remote with 164' (50m) cable
- Gauge Port Central (GPC)
- Modular Boom Controls (MBC)
- Ergonomic Boom Control (EBC) with OneTouch™
- Extended Range EBC
- 24V electrical system

Clean Out

- Fast and easy clean out
- 406 psi (28 bar) hydraulically-driven water pump
- Wash out kit and hose
- 206 gallon (780L) water tank in outrigger

Outriggers

- Quick setup on restrictive job sites
- Fully hydraulic outriggers with integral cylinders
- Front outriggers swing out, telescope and extend down
- Rear outriggers swing out and extend down
- Fuel tank in outrigger
- Water tank in outrigger
- Four outrigger pads in two side compartments
- One-Sided Support (OSS) system featuring a 180° working range
- Bubble level indicators

EZ Clean Out RS 907L Hopper

- Large 19.4 cu ft (550L) capacity
- Hard-faced remixer paddles
- Vibrator
- Hinged splash guard covers hopper during transit
- Low hopper height allows easy discharge from a mixer truck
- Automatic lubrication
- Integrated work lights

S-Valve

- Ideal for high pressure applications and harsh mixes
- Hard-faced S-Valve
- Gradual 9" to 7" (230 to 180mm) reduction
- Thick-walled valve construction
- Lasting wear over years of use

Concrete Pump

- Choose from high pressure or high volume with the same setup
- Free flow hydraulic system for smooth, controllable pumping
- Multi-piece piston cup design
- Automatic lubrication of the concrete pistons for long service life
- Hard-chromed material cylinders
- Redundant proximity sensor system with function indicators
- Fully adjustable volume control for very slow pumping with full concrete pressure and boom speed
- Modular pump control box

Putzmeister PRO-VANTAGE WARRANTY PLAN

The PRO-VANTAGE® Warranty Plan extends the coverage on all Putzmeister BSF boom pumps for a total of 36 months or 6,600 hours at no extra charge.



Maneuverable Design Goes the Distance

Offering a 180° working range in One-Sided Support (OSS) mode, the 58Z-Meter has the ability to make the most efficient use of its 189' (57.60m) vertical reach in congested areas. The flexibility of the boom's five-section Z-Fold design further enhances the placement

options and convenience of this 50-meter class model. Boom sections can be deployed in both 'Z' positions and the popular 'A-frame' configuration, depending on application requirements.

Putzmeister

BOOM PUMP

ADVANTAGE



Modular Flatpack

Fully removable, Putzmeister's modular bolt-on flatpack and hydraulic system combine versatility and servicing convenience. This simple design allows for cost-effective, minimally labor intensive pump cell replacement for upgrades, repairs or as part of a maintenance program.



Fuel Economy

Switch gears and save with Putzmeister's patented Econo-Gear™. The exclusive design allows the Mack chassis engine to run at a lower rpm, achieving less stress on wear parts, lower noise levels and reduced fuel consumption. Econo-Gear makes a significant impact on job site safety and profitability with an estimated 10-15% savings.



Convenience and Control

The Frequency Hopping system on the standard HBC proportional radio remote ensures minimal interference with other frequency transmitters. Radiomatic Power Boost further enhances reception quality with a 50-100% increase in signal power. A fully proportional cable remote is also standard. Unlike other remote control systems, the radio and cable remote systems are completely independent, offering redundancies to ensure complete proportional operation with either the radio or cable remote in the event of a problem.