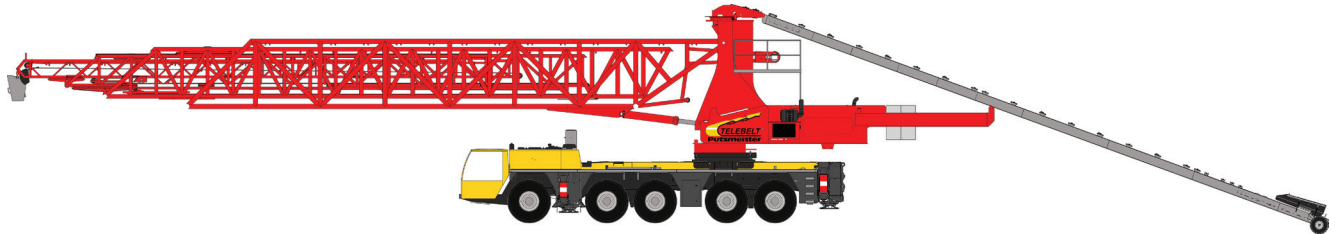


Preliminary Telebelt® TB 200 Telescopic Belt Conveyor

Putzmeister

1



- 200' (61m) Horizontal Reach
- Infinitely Variable Speed of Main and Feed Conveyors
- 360° Rotation of Main and Feed Conveyors
- Max. Rated Output at 0°: 5 yd³/min (4m³/min)
- Max. Rated Capacity at 20°: 3 yd³/min (2m³/min)
- Place Materials Sized up to 6" (150mm)

Boom Four section high strength tubular steel construction telescopic boom. Simple to operate, one lever controls all main conveyor movements. At full extension, a 200-ft. (61m) horizontal reach is achieved. Maintenance-free sealed roller bearings mean no time wasted greasing; and the quick telescoping feature and versatile 360° rotation enables immediate use once on-site.

Main Conveyor A continuous 24-in. (610mm) 3-ply nylon cord vulcanized spliced belt – "hot melt" with no staples or mechanical splices – is on a series of highly durable pulleys. An infinitely variable belt speed control from 0 to 10 allows the operator to select the ideal output for the task. A tungsten carbide scraper blade at the discharge end ensures clean operation by scraping materials back into the reducer and down into the pour.

Feeder Belt A versatile feed conveyor with 360° rotation allows materials to be loaded from virtually any position. Feed the 24-in. (610mm) belt via a mixer truck, dump truck coal chute, skid-steer loader or front-end loader. A sturdy integrated UHMW polyurethane feeder hopper can accommodate the toughest of mixes, as well as aggregates from sand to 6-in. (150mm) diameter rock – with no priming necessary.

Boom Control and Operation Main conveyor functions are controlled through a Modular Boom Control (MBC) system. Unlike a stacked valve arrangement, this unique modular approach allows maintenance on a single valve without removing the entire valve assembly. This reduces labor and parts costs, yet improves overall machine control.

This ergonomic design features main conveyor rotation and elevation; main conveyor telescopic functions; main and feed on/off and variable independent belt speed control. The unit is equipped with a radio remote control which controls all functions.

Handling Various Materials Due to its unique design, the Telebelt can convey a variety of materials. The TB 200 offers quick and convenient placement of everything from mass concrete and aggregates up to 6-in. (150mm) rock to backfill, wood chips, sand and pervious concrete with ease, enabling you to diversify into several different arenas.

Trunk or End Hose Telebelt conveyor design allows for smooth, surge-free flow from the 16-ft. (5m) trunk to reduce labor costs and make material placement easier on the hoseman. Both 12-in. (305mm) and 16-in. (406mm) tremies, which are steel cones at the tip end of the main conveyor, and 12-in. (305mm) and 16-in. (406mm) end hose delivery trunks with chain binders to connect them, come as standard equipment. For larger volume pours and rock jobs, the 16-in. (406mm) package is the ideal choice.

Outriggers Telescopic outriggers allow quick and easy setup in congested areas, whether on solid or rough terrain. This helps to quickly complete jobs from one convenient setup location. Front and rear outriggers hydraulically telescope out and extend down. Activate the outrigger controls from the side of the unit with the blue tooth enabled controls.

Clean Out Washing the hopper with belts running takes care of most of the clean up. A high pressure water pump with a large capacity tank is optional equipment. And remember, with conveying, no additional material is wasted.

Additional Standard Features Transfer chute, service platforms, emergency stop button, high quality paint finish, operator manuals and ship-away kit are all standard.

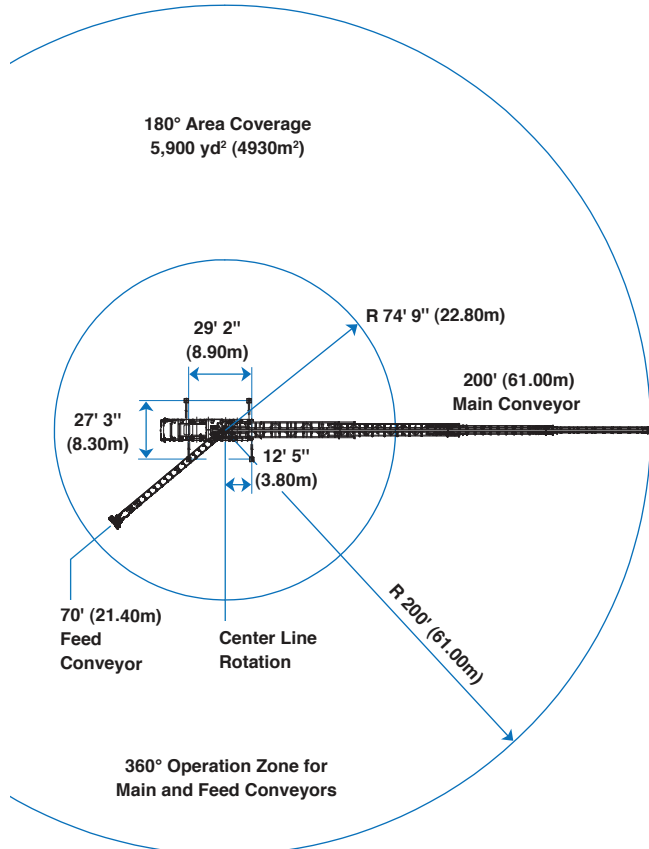
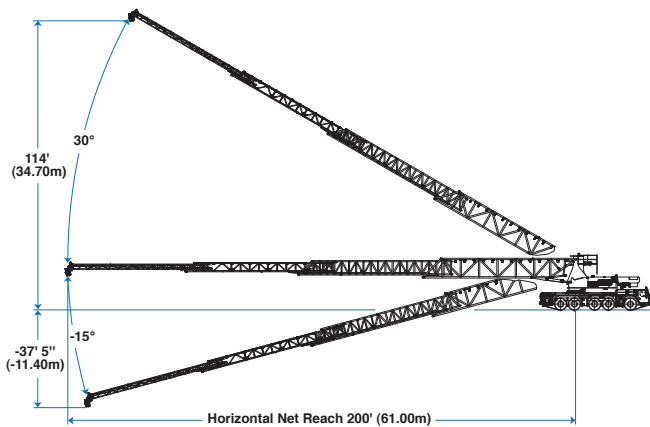
Options Rock hopper, soil hopper, front-end loader hopper, low profile hopper, side loading channels and custom paint schemes are optional.

Putzmeister Telebelts offer:

- Precision Placement
- Mobility
- Quick Setup
- Versatility Across Various Mixes and Flowable Materials
- Maneuverability Over Obstacles
- Reduced Labor Requirements
- Simple Maintenance
- Extended Reach Capabilities

Application Opportunities:

- Hydroelectric Dams
- Power Plants
- Foundry Works
- Breakwater Structures
- Wharf and Dock Facilities
- Airport Runways and Facilities
- Elevated, Subway and High Speed Rail Construction
- High-Rise Foundations
- Roadway and Bridge Structures
- Water Treatment Plants



Telebelt® TB 200 Specifications

Conveyors

Conveyor horizontal reach		
Maximum at 0°	200'	(61.00m)
Maximum at 30°	174' 7"	(53.20m)
Conveyor belt width	24"	(610mm)
Feed conveyor length	70'	(21.40m)
Feed conveyor belt width	24"	(610mm)
Feed conveyor operating zone	360°	
Discharge height from grade		
Maximum at 30°	114'	(34.70m)
Maximum at -15°	-37' 5"	(-11.40m)
Rated capacity		
at 0°	5 yd ³ /min	(4m ³ /min)
at 20°	3 yd ³ /min	(2m ³ /min)

Outriggers

Outrigger spread Front-Rear hydraulic extend out/down	29' 2"	(8.90m)
Outrigger spread Left-Right hydraulic extend out/down	27' 3"	(8.30m)

Accessory Equipment

- Radio Remote / Cable Remote
- Proportional control for main boom function
- 12" (305mm) and 16" (406mm) diameter tremies
- 12" (305mm) and 16" (406mm) diameter delivery trunks in 16' (5m) lengths with binder
- High pressure washout system with water tank
- Spring tensioned belt scraper system
- Service Platform
- Operators manuals and one complete ship-away kit

Maximum theoretical values listed.
Right to make technical amendments reserved.

www.putzmeister.com